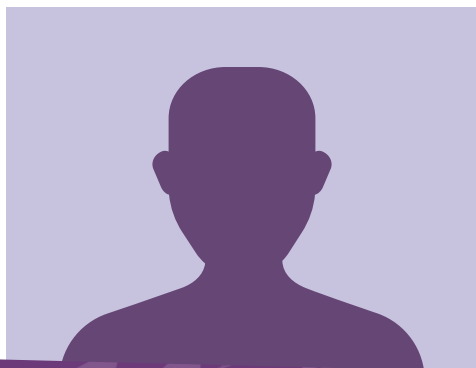


Nursing and Midwifery

Your quick guide to being a rep

Who's who?



School Officer (September Cohort)
Saima Zuhra
saima.zuhra@bnu.ac.uk

Head of School

Paul Maloret
paul.maloret@bnu.ac.uk

Deputy Head of School

Julia Williams
julia.williams@bnu.ac.uk

Deputy Head of School

Sue Higham
sue.higham@bnu.ac.uk

Director of Education

Christina Ebanks
christina.ebanks@bnu.ac.uk

Staff Celebration

We want to hear who is going above and beyond and deserves recognition for their work in supporting students. You can nominate Staff members for a Staff Celebration award at bucksstudentsunion.org/yourvoice/staffcelebration.

One of last year's Nursing and Midwifery nominations said the following:

"Since I started in September 2020, Geeta has been a welcoming presence over the past three years; therefore, she deserves this staff celebration nomination. She interacts with every student and always does her best to encourage and support them. She also genuinely values the students' views, and by chairing the Programme Committee Meetings, she engages with the issues raised and takes appropriate action and any queries from students are welcomed, and she will do her best to respond or signpost them to the appropriate person."

Please feel free to contact surepresentation@bnu.ac.uk about any concerns you may have about your course

National Student Survey 2022–2023 Feedback

What is the National Student Survey?

The National Student Survey is an anonymous opportunity for final year students to look back on their higher educational experience and feedback on different areas including the positives and areas of improvement surrounding their course for the University to use to improve students experiences in the future.

2022–2023 Results

BNU Celebrated an average of **84.6%** satisfaction across NSS categories.

Overall, Nursing and Midwifery School Satisfaction:

- With the University: **82.8%**
- With the Students' Union: **87.2%**

Common feedback occurrences to keep an eye on this year:

- Lack of support during placements.
- Mismatch between grades and feedback.

How does the NSS relate to you as a Student Representative?

We use the eight NSS categories as part of the 'Your Voice' feedback collection for Programme Committee Meetings, to make sure that key areas of your student experience are being fed back on appropriately.

Additionally, we want to know what we can do to improve our service as a Students' Union to support you. Feel free to email any suggestions to **surepresentation@bnu.ac.uk**.

Please feel free to contact **surepresentation@bnu.ac.uk** about any concerns you may have about your course